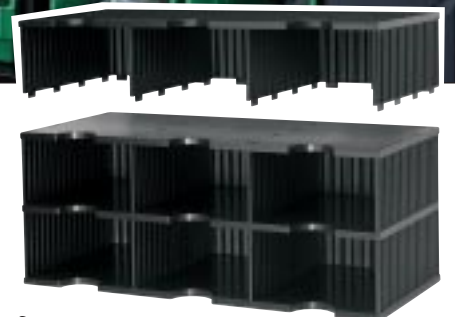


Access™ Modular Storage



A modular alternative to storing your supply bins.



from **npsg**

Don't conform to prefabricated material storage units!

Why buy preconfigured storage units that are too big or too small for your needs? Access Modular Storage Units allow you to create the configuration that's right for you....one tier at a time. No tools to mess with and no wood to warp, steel to bend, or corrugated cardboard to sag.



Shown here, A 9-tier, 27-slot Modular Storage Unit supporting 540 lbs. of lead weights to demonstrate the strength of these versatile, Modular Storage Units. Bins not included.



Strong and lightweight...

The durable "ripple" wall, polystyrene construction costs considerably less than steel. And less weight keeps shipping costs down.

Modular design...

Access Modular Storage Units are the only storage units that allow you to add on at any time.

All models ship UPS...

Lower freight cost for you, so you can pass the savings along to your customers.

All models ship KD...

Deliveries arrive intact, with zero damages and no returns.

Fast, no-tool assembly...

Even the largest unit—30 slots—assembles in just minutes. One person, no tools.

Repeat \$'s from customers...

Increase capacity by adding extra tiers at any time. When you meet capacity, build another unit side-by-side.



Add on at any time. No tools needed.



Works well in a wide variety of workstations.

3-wide Modular Storage Units

Start with any of these 3-wide kits and add more tiers as you need them. Slot inner dimensions are 9 1/8" w x 12 3/4" d x 5" h—ample space for all types of supplies. Each tier has 3 slots. All units include index tabs for each slot. Available in black (shown) or gray. Bins not included.

Model	Slots	Dimensions
TD-3H-06	6	28 1/2" w x 11 1/2" h x 13" d
TD-3H-09	9	28 1/2" w x 17" h x 13" d
TD-3H-12	12	28 1/2" w x 22 1/2" h x 13" d
TD-3H-15	15	28 1/2" w x 28" h x 13" d
TD-3H-24	24	28 1/2" w x 33 1/2" h x 13" d
TD-3H-27	27	28 1/2" w x 39" h x 13" d
TD-3H-30	30*	28 1/2" w x 44 1/2" h x 13" d

3-wide Add-on Units

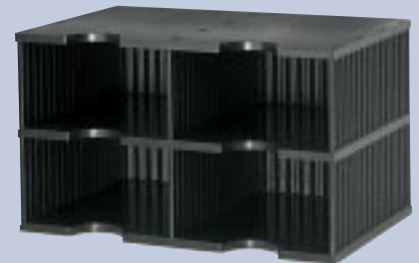
Model	Slots	Dimensions
TDA-3H-03	3	28 1/2" w x 5 1/2" h x 13" d
TDA-3H-12	12	28 1/2" w x 22" h x 13" d

Please specify black or gray when ordering.
* Recommended maximum height.

Organize your supplies in smaller work spaces with 2-wide Modular Storage Units.

Our 2-wide Modular Storage Units organize materials in even the smallest spaces. At only 19" wide by 13" deep, you can keep supplies neat while taking less than 2 square feet of space. Each tier has 2 slots. All units include index tabs for each slot. Available in black (shown) or gray. Bins not included.

Model	Slots	Dimensions
TD-2H-04	4	19" w x 11 1/2" h x 13" d
TD-2H-06	6	19" w x 17" h x 13" d
TD-2H-08	8	19" w x 22 1/2" h x 13" d
TD-2H-10	10	19" w x 28" h x 13" d
TDA-2H-02	2 slot add-on	19" w x 5 1/2" h x 13" d
TDA-2H-08	8 slot add-on	19" w x 22" h x 13" d



Please specify black or gray when ordering. Recommended maximum height is 10 tiers.

STRUCTURE OF ACCESS MODULAR STORAGE NOT TO EXCEED TEN (10) TIERS HIGH. CAPACITY OF ACCESS MODULAR STORAGE UNIT NOT TO EXCEED SIXTY (60) LBS. PER TIER (20 LBS. PER SLOT). MODULAR STORAGE UNITS SOLD EMPTY, BINS NOT INCLUDED.



New Product Specialties Group
P.O. Box 499, Marlboro, NJ 07746
(732)625-8000 • FAX (732)625-8100